

EPA Office of Small Business Programs
Disadvantaged Business Enterprise (DBE) Program

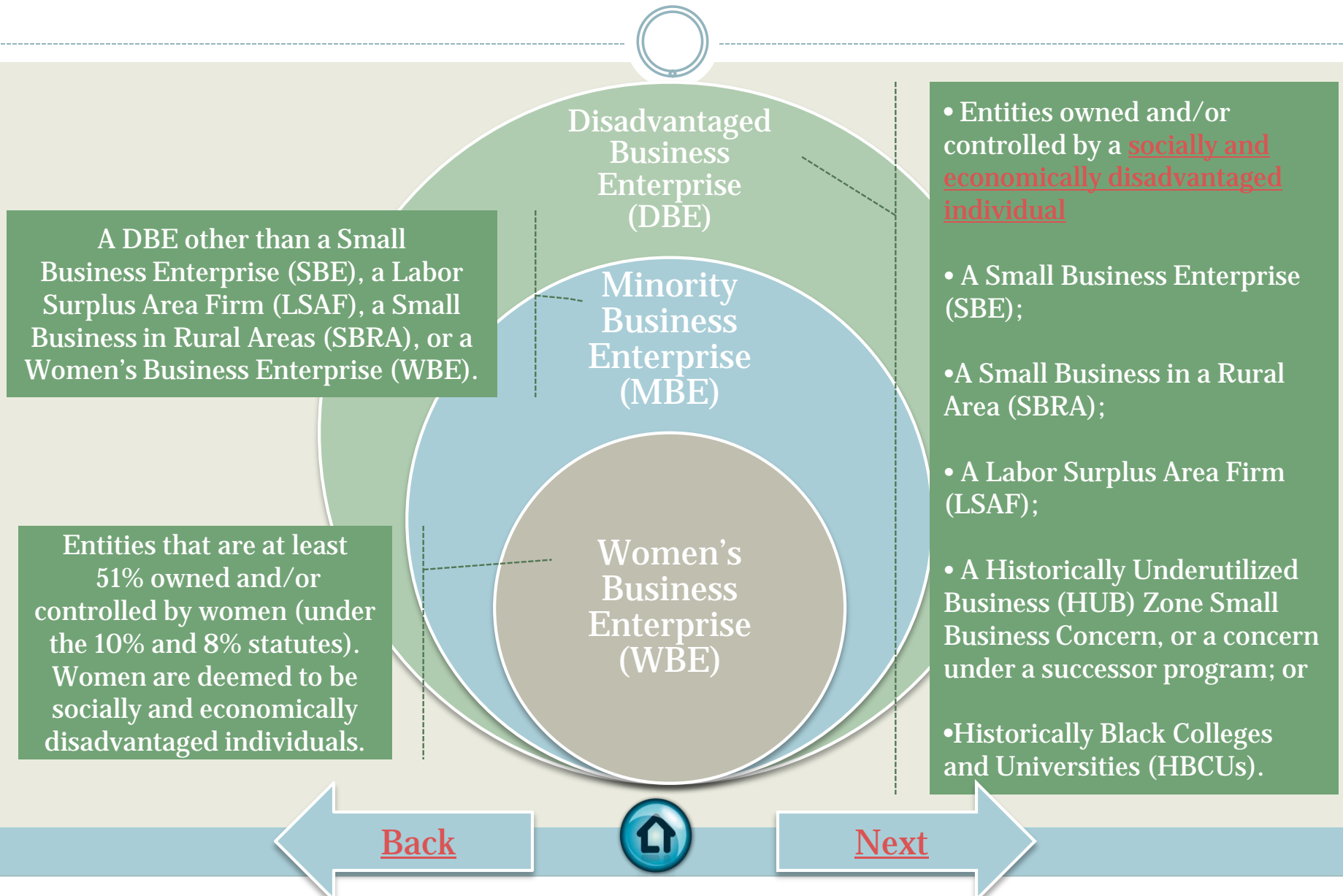
Computer-Based Learning Series



**DISADVANTAGED BUSINESS
ENTERPRISE (DBE) CERTIFICATION**

[Start](#)

What are DBEs MBEs and WBEs?



Purpose of the EPA DBE Certification



Pursuant to [40 CFR 33.201](#) in order for a prime contractor or subcontractor to be counted toward a [financial assistance award recipient's MBE/WBE](#) accomplishments, it must be certified.



Getting Certified



A firm must first attempt to get certified by the following entities before seeking EPA certification:

- 1) The United States Small Business Administration (SBA), under its [8\(a\) Business Development Program](#) or its [Small Disadvantaged Business \(SDB\) Program](#);
- 2) The United States Department of Transportation (DOT), under its regulations for participation by [Disadvantaged Business Enterprises in DOT Programs](#), with U.S. citizenship; or
- 3) an Indian tribal government, state government, local government or independent private organization in accordance with EPA's 8% or 10% statute as applicable as long as their standards for certification meet or exceed [EPA's requirements](#).

If an entity holds one of these certifications, it is considered acceptable for establishing MBE or WBE status under EPA's DBE Program, and application for EPA certification is not needed.

[Back](#)



[Next](#)

Getting Certified



EPA will ONLY consider certification applications from entities that have first attempted to be certified by SBA or DOT, or a Tribal, State, or local government, or by an independent private organization, and be unsuccessful in that attempt.

Proof of an unsuccessful attempt is required as a part of the application process.



Entities EPA will Consider Certifying



1. Disabled American-owned firms;
2. Private and voluntary organizations controlled by individuals who are socially and economically disadvantaged;
3. Women-owned and minority owned-businesses who cannot get certified under DOT or SBA size criteria (EPA does not have size criteria) or by a state government, local government, Indian tribal government or independent private organization;
4. Businesses owned or controlled by socially and economically disadvantaged individuals (note—SBA and DOT require an entity to be owned and controlled by socially and economically disadvantaged individuals. However, the statutory authority for EPA’s DBE program requires ownership or control); and
5. Women-owned business enterprises.

[Back](#)



[Next](#)

EPA DBE Certification Process



Applications are filed with EPA OSBP. Applications can be obtained from EPA OSBP, from regional [DBE Coordinators](#), and from EPA Office of Small Business [website](#). The application includes the following:

1. An attestation to the accuracy and truthfulness of the information on the application form by sworn affidavit, or an unsworn declaration executed under penalty of perjury of the laws of the United States.
2. The application must include evidence demonstrating that the entity is owned and/or controlled by one or more individuals claiming disadvantaged status, along with certifications or narratives regarding the disadvantaged status of such individuals.
3. The application must include documentation of a denial of certification by a Federal agency, state government, local government, Indian tribal government, or independent private organization.



EPA DBE Certification Process (cont.)



- Once applications are filed, EPA OSBP will advise each applicant within 15 days, whether the application is complete and suitable for evaluation and, if not, what additional information or action is required.
- EPA OSBP will make its certification decision within 30 days of receipt of a complete and suitable application package.
- EPA certifications will last for three years as long as the certified entity files an annual affidavit affirming that no changes in circumstances have occurred which affected the entity's status as an MBE or WBE. Appeal procedures are provided for entities denied MBE or WBE certification, or anyone who disagrees with EPA's decision to certify an entity as an MBE or WBE.



Now Lets See How Much You've Learned!



[Start Quiz](#)

[Back](#)



Knowledge Check



Only firms that are formally certified can count toward a recipient's MBE/WBE accomplishments.

TRUE

FALSE

DOT certified Disadvantaged Business Enterprises (with U.S. Citizenship) must also seek certification from EPA in order to be considered an EPA MBE/WBE.

TRUE

FALSE

EPA will ONLY consider certification applications from entities that have first attempted to be certified by SBA or DOT, or a tribal, state, or local government, or by an independent private organization, and be unsuccessful in that attempt.

TRUE

FALSE

Back

Finish

Congratulations!!



You have completed the DBE Certification
computer-based learning module.

For more information on the EPA DBE Program,
please visit the OSBP [website](#).