



How Do I Generate an Emission Snapshot?

Introduction

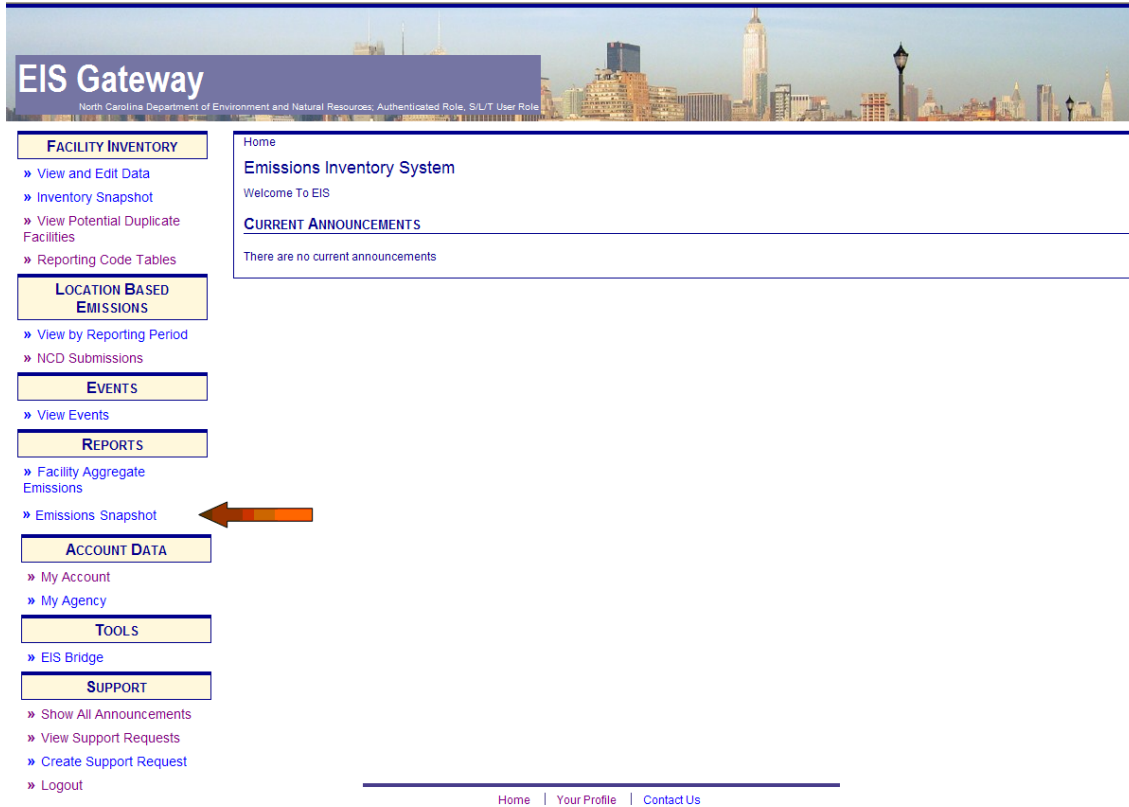
The EIS Gateway contains a feature called Emissions Snapshot. It allows you to download emissions data submitted to EIS for your agency. Like the inventory snapshot, the resulting dataset is an EIS CERS XML file with your emissions data as of the time you request the snapshot. This section of the EIS User's Manual describes the steps involved in downloading an Emissions Snapshot.

IMPORTANT PROCESS NOTE

EIS creates emissions snapshots for emissions submitted by State, Local and Tribal agencies at the end of each day. This means that emissions you submit will not be available to download as part of an emissions snapshot until the following day.

Step 1:

From within the EIS Gateway, you will see on the left side of the page a heading entitled “Reports.” Under this heading, select the option “Emissions Snapshot.”



EIS Gateway
North Carolina Department of Environment and Natural Resources; Authenticated Role, S/L/T User Role

FACILITY INVENTORY

- » View and Edit Data
- » Inventory Snapshot
- » View Potential Duplicate Facilities
- » Reporting Code Tables

LOCATION BASED EMISSIONS

- » View by Reporting Period
- » NCD Submissions

EVENTS

- » View Events

REPORTS

- » Facility Aggregate Emissions
- » Emissions Snapshot

ACCOUNT DATA

- » My Account
- » My Agency

TOOLS

- » EIS Bridge

SUPPORT

- » Show All Announcements
- » View Support Requests
- » Create Support Request
- » Logout

Home

Emissions Inventory System

Welcome To EIS

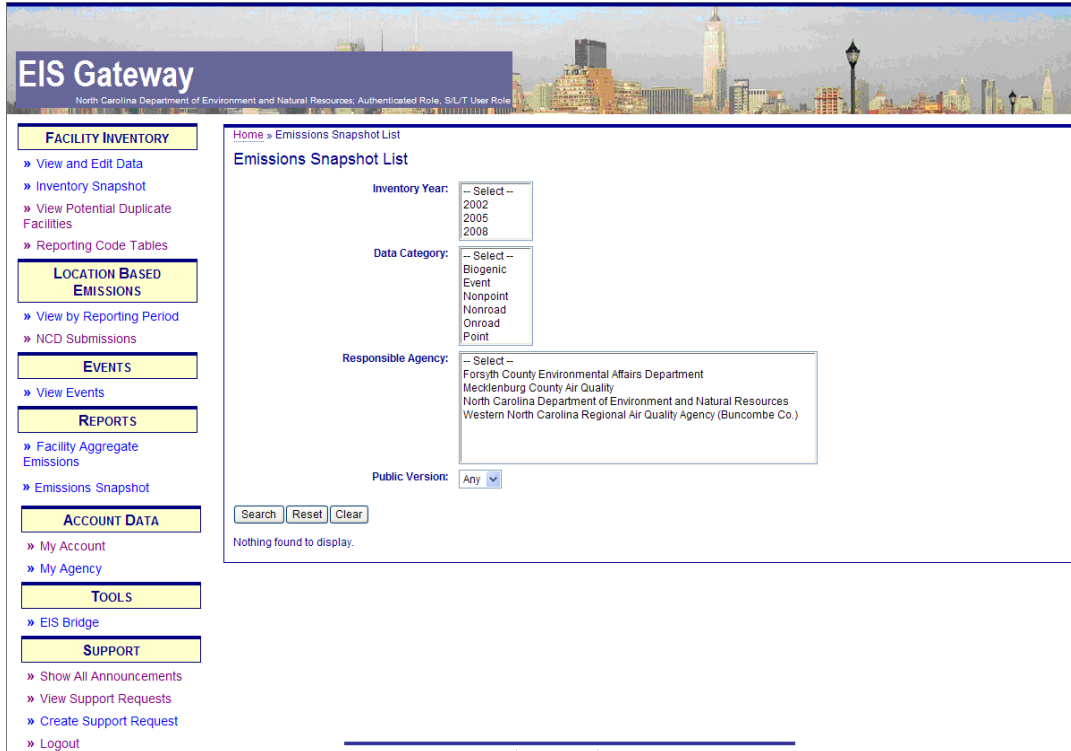
CURRENT ANNOUNCEMENTS

There are no current announcements

Home | Your Profile | Contact Us

Step 2:

After you select the Emissions Snapshot option from the main page, you will be presented with the Emissions Snapshot List screen. This is where you'll request an emissions snapshot. The example below illustrates how the screen will appear for a State user.



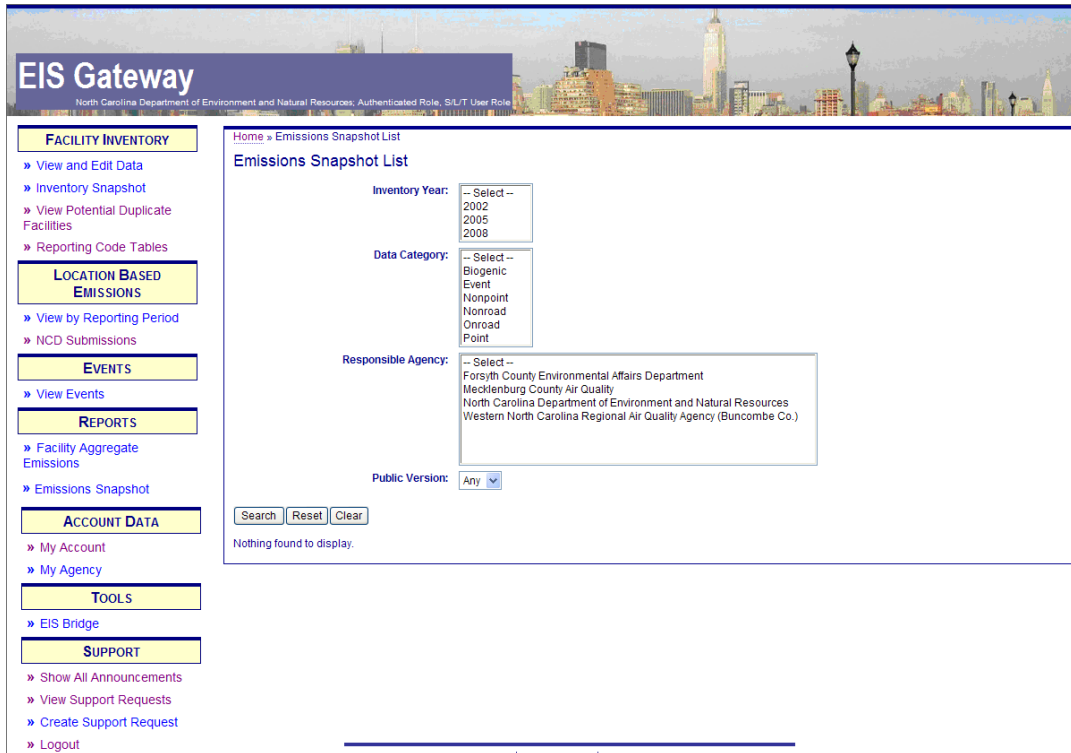
The screenshot shows the 'Emissions Snapshot List' interface. On the left is a sidebar with navigation links: FACILITY INVENTORY, LOCATION BASED EMISSIONS, EVENTS, REPORTS, ACCOUNT DATA, TOOLS, and SUPPORT. The main content area has a breadcrumb 'Home » Emissions Snapshot List' and a title 'Emissions Snapshot List'. Below the title are three dropdown menus: 'Inventory Year' (options: 2002, 2005, 2008), 'Data Category' (options: Biogenic, Event, Nonpoint, Nonroad, Onroad, Point), and 'Responsible Agency' (options: Forsyth County Environmental Affairs Department, Mecklenburg County Air Quality, North Carolina Department of Environment and Natural Resources, Western North Carolina Regional Air Quality Agency (Buncombe Co.)). There is also a 'Public Version' dropdown set to 'Any'. At the bottom of the filters are 'Search', 'Reset', and 'Clear' buttons. Below the filters, it says 'Nothing found to display.'

- If you are an EPA/System user, you will be able to download an emissions snapshot from any responsible agency.
- If you are an EPA Regional office user, you will be able to download an emissions snapshot for all the agencies in your region.
- If you are a State user, you will be able to download an emissions snapshot for your agency and any local agency in your State that has submitted emissions data to EIS.
- If you are a local agency user, you will be able to download an emissions snapshot for your agency. You will also be able to generate an emission snapshot of any State emissions data that was submitted for your agency.
- If you are a Tribal agency user, you will be able to generate an emissions snapshot for your agency.

Please note that you will be able to download an emissions snapshot for any agency that has granted your agency the ability to view their data through EIS.

Step 3:

On the Emissions Snapshot List page you will have the ability to refine your request for a snapshot by the Inventory Year, the Data Category, the Responsible Agency, and whether the emissions have been made available to the public or not.



Data sets whose Public Version is set to NO can only be downloaded by the agency for which the data were submitted.

Data sets whose Public Version is set to YES can be downloaded by any agency.

Step 4:

Select the criteria for your emissions snapshot and select the **Search** button. The results matching your selection will appear in the grid below the Search button.

Home » Emissions Snapshot List

Emissions Snapshot List

Inventory Year:
2002
2005
2008

Data Category:
Biogenic
Event
Nonpoint
Nonroad
Onroad
Point

Responsible Agency:
Forsyth County Environmental Affairs Department
Mecklenburg County Air Quality
North Carolina Department of Environment and Natural Resources
Western North Carolina Regional Air Quality Agency (Buncombe Co.)

Public Version:

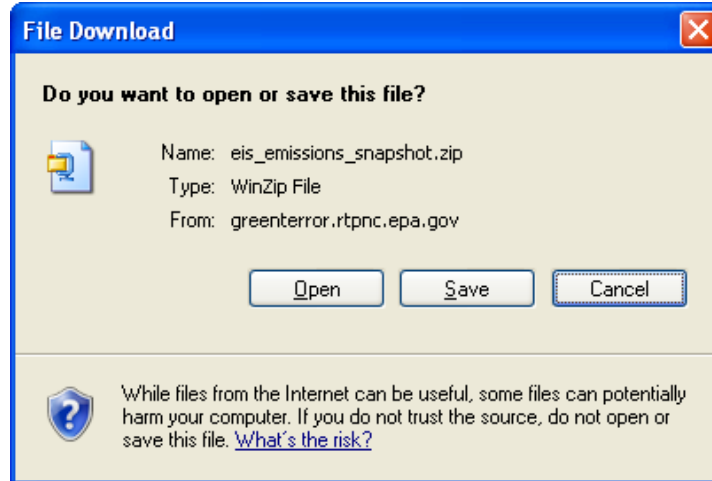
1 item found, displaying all items.

Inventory Year	Data Category	Dataset Name	Responsible Agency	Public Version	Last Snapshot Generated Time
2008	Point	Forsyth County Environmental Affairs Department	Forsyth County Environmental Affairs Department	no	2009-10-26 06:02 PM

1 item found, displaying all items.
Download Results: [CSV](#)

Step 5

Click on the data set name and a file download window will appear. You can either open the file directly in a Win-Zip window or you can save the file to any location you choose.



The Zip file contains your selected dataset in the EIS CERS XML format.