

Fresno, CA and surrounding area

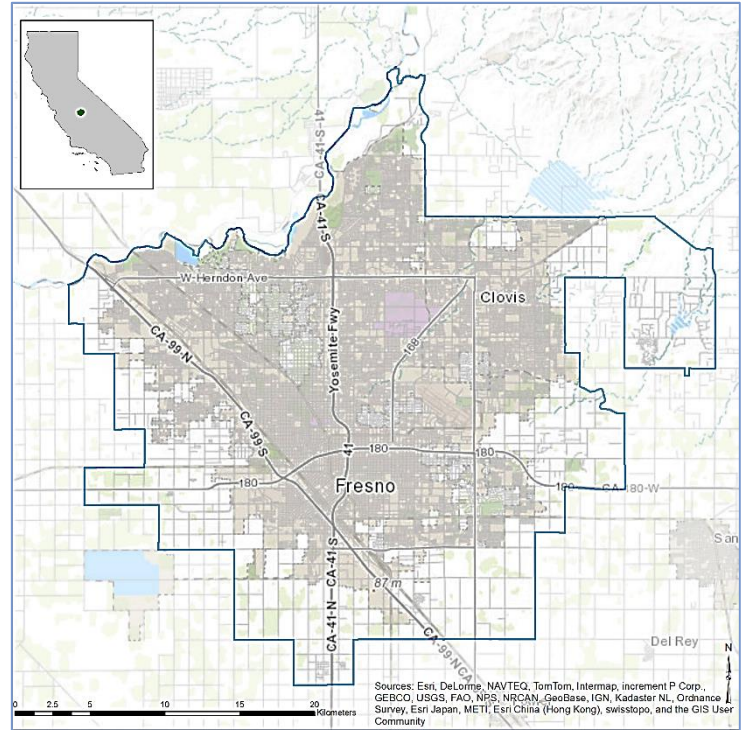
EnviroAtlas combines maps, graphs, and other analysis tools, fact sheets, and downloadable data into an easy-to-use, web-based educational and decision-support tool. EnviroAtlas helps users understand the connections between the benefits we derive from ecosystem services and the natural resources that provide them. For more information, please visit our [website](http://enviroatlas.epa.gov).

For selected U.S. communities, EnviroAtlas includes fine-scale maps and other information about existing and potential benefits from the local natural environment. This fact sheet highlights some of the many community data layers available.

Background

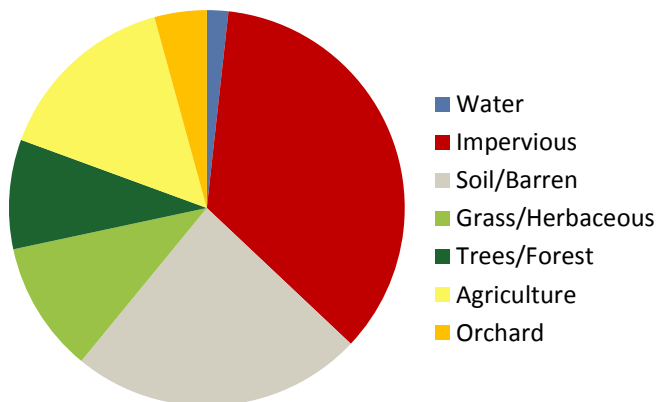
The Fresno, CA area was chosen as an EnviroAtlas community because it offers several opportunities to leverage existing research and community engagement activities. It has also received poor air quality ratings that can be evaluated from a green infrastructure perspective. The EnviroAtlas boundary for the Fresno, CA area was determined using the 2010 Census definition of an Urban Area. It includes the greater Fresno area, as well as Clovis and other portions of Fresno County. The area measures 597 square kilometers, and encompasses 405 census block groups.

The Fresno, CA area is in the Central California Valley ecoregion. It has a mild mid-latitude climate with long, hot, dry summers and slightly wet winters. The region was once



vegetated with extensive grasslands but has mostly been converted into agriculture with some urban and suburban development. The leading industries in the area are agriculture and healthcare. Community and Saint Agnes Medical Centers, the City of Fresno, and Kaiser Permanente are among largest employers in the area. The demographics of the Fresno community area indicate that the potential exists for income and other disparities in the distribution of environmental assets. EnviroAtlas includes demographic maps that can help screen for potential health and well-being disparities resulting from disproportionate distribution of “green infrastructure.”

Percent Land Cover in Community Area



Fresno Area Demographics

Total population	659,628
Under 13 years old	21.05%
Over 70 years of age	7.15%
Other than white/non-Hispanic	64.33%
Below twice the poverty level	44.47%

Ecosystem Services Overview

In EnviroAtlas, ecosystem services are organized into seven benefit categories:

- Clean air
- Clean and plentiful water
- Natural hazard mitigation
- Climate stabilization
- Recreation, culture, and aesthetics
- Biodiversity conservation
- Food, fuel, and materials (data available only in select communities)

EnviroAtlas helps users understand the connections between the benefits we receive from ecosystems services and the natural resources that provide them. Examples of some of the environmental data included in EnviroAtlas are detailed below:

Access to Parks

Parks provide access to green space, encourage physical activity, and improve the livability and aesthetics of urban areas. Those who live closer to parks may be more likely to receive multiple benefits associated with this proximity.

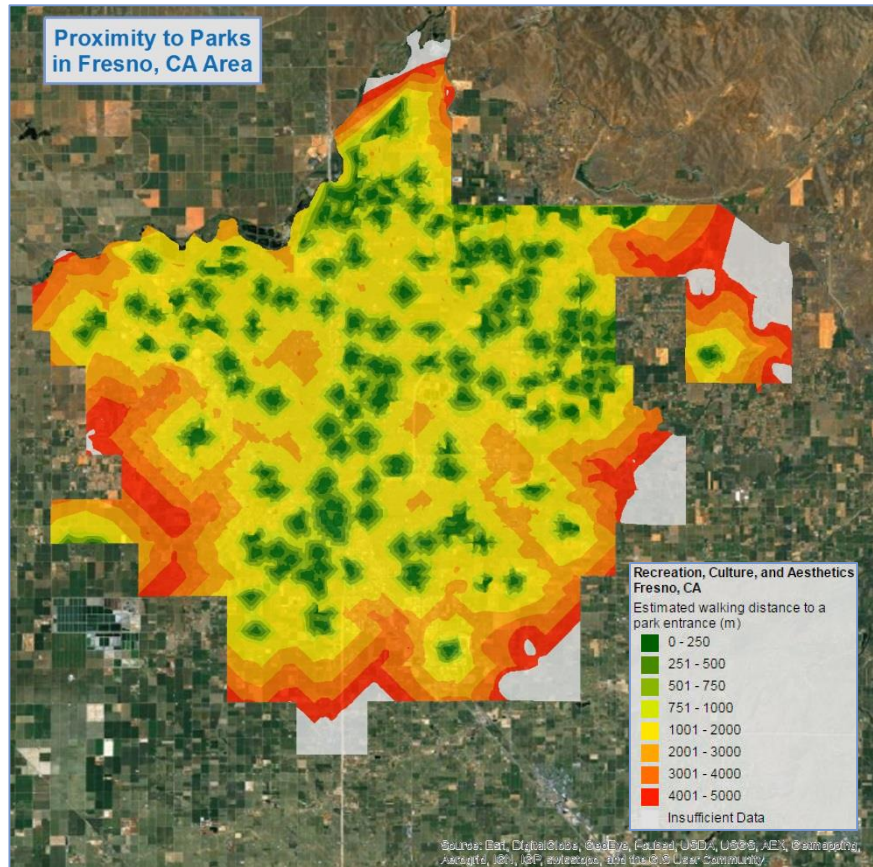
- An estimated 14 percent of the Fresno area is located within easy walking distance (500 meters) of a park entrance (dark and medium green areas in figure at right).
- An estimated 6 percent of the Fresno area does not have a park entrance within 5 kilometers (white areas in figure at right).

Stream and Lake Buffers

Natural land cover adjacent to streams and rivers, sometimes called the riparian area or zone, helps protect water quality and supply for drinking, recreation, and aquatic habitat. The EnviroAtlas community component analyzes stream and lake buffers in widths of 15 and 50 meters.

EnviroAtlas Tools and Features

- [EnviroAtlas Community Component](#): data layers based on 1-meter land cover summarized to the block group scale.
- [EnviroAtlas National Component](#): data layers based on 30-meter land cover summarized to the watershed scale.
- [EnviroAtlas Interactive Map](#): go directly to the interactive map.
- [EnviroAtlas Fact Sheets](#): Describe the project, each community, and each data layer in detail.
- [Eco-Health Relationship Browser](#): An interactive relational tool that explores ecosystems, the services they provide, and benefits to human health and well-being.
- [Contact the EnviroAtlas Team](#): Please contact us if you have any questions about EnviroAtlas.



Proximity to park entrances

- An estimated 1.8 percent of Fresno's land area is within 50 meters of a stream or lake.
- 14 percent of Fresno's 50 meter stream and lake buffers are forested.
- 17 percent of Fresno's 50 meter stream and lake buffers are impervious.

In addition to the Clean and Plentiful Water benefit category, stream and lake buffer data layers can also be found under Biodiversity Conservation, Natural Hazard Mitigation, and Recreation, Culture and Aesthetics in the interactive map's table of contents.

EnviroAtlas combines maps, graphs, and other analysis tools, fact sheets, and downloadable data into an easy-to-use, web-based educational and decision-support tool. EnviroAtlas helps users understand the connections between the benefits we derive from ecosystem services and the natural resources that provide them. For more information, please visit our [website](#).