

# New TRI-MEweb: Now Available

TRI-MEweb, the application facilities use to prepare and submit Toxics Release Inventory (TRI) reporting forms, has a new look! The modernized application streamlines and simplifies the process you use to prepare and certify forms.



## Accessing Information

You can now manage your facility, user profile, and view a snapshot of your form status, pending submissions and release trends, all from one location.



## Online Help

The new TRI-MEweb now has on-page guidance within form sections. You can search for regulatory or chemical specific topics by entering key words in the Online Help feature.



## Simplified Navigation

Navigating the application is easier and more intuitive with a new combined questionnaire and form mode.



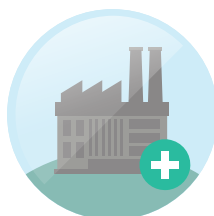
## Checking for Errors

You can now check for facility and form errors without leaving the page. The on-page checks and alert messages are more precise, so you know exactly what needs to be fixed.



## For Certifying Officials

Certifying officials can now opt in for a Short Message Service (SMS) verification as an alternative to answering security questions when electronically signing and sending submissions to EPA.



## TRI Facilities Wizard

Whether you are creating a new TRI facility or adding an existing one, the process is easier than ever. TRI-MEweb now asks you simple questions to guide you through the process.

➤ We hope you will enjoy the transformed **TRI-MEweb**.

### For more information

🌐 <https://www.epa.gov/tri>

☎ (888) 890-1995

A modernized TRI-MEweb is now available to TRI users. The new application offers enhanced user experience and streamlines the reporting process through intuitive design. The new application offers the following features:



**Easily Accessible and Improved Online Help allows you to:**

- Search on regulatory topics, TRI chemicals, or specific form sections from a centralized tool
- View context sensitive tips via instructional language, hover text and icons
- Use short tutorial segments to learn how to complete certain tasks in TRI-MEweb
- Launch a live chat from the software
- Access contact information for the CDX Help Desk and TRI Information Center



**Simplified Navigation allows you to:**

- Navigate 50% fewer pages to prepare and certify forms
- Use progress bars to navigate a form and to certify



**Enhancements for Certifying Officials allow you to:**

- Use a Short Message Service (SMS) verification to sign pending forms
- Enter comments when canceling form to relay information to preparers
- Easily sign your TRIFID signature agreement as part of the form certification process



**Simplified Facility Management allows you to:**

- Link a facility to TRI-MEweb accounts by answering simple questions
- Manage multi-establishments more easily
- Request a facility access key directly from TRI-MEweb rather than through the CDX Help Desk



**Improved Error Checking allows you to:**

- Validate facility and form data in a single step
- View relevant errors while preparing form sections
- Receive more detailed explanations for possible error alerts
- Correct facility critical errors using error navigation mode



**Easy Access to Information allows you to:**

- View the status of initiated forms
- View chemical release trends for each facility
- Get notifications about your reporting status and use links to navigate to applicable sections
- Update your CDX profile information

For more information visit us online or contact the CDX help desk.

☎ (888) 890-1995 | 🌐 <https://www.epa.gov/tri>